

PRO LEVEL CERTIFICATION

During the PRO Level Certification, you will learn advanced design and techniques of Silver Metal Clay with Art Clay through these 6 projects

Techniques

- Creation of a hollow form
- Texturing by hand
- Faceted gemstone flush setting
- Mirror and satin finish

Module A* *Bamboo mold with inlaid stones*



Module B* *Japanese Inro Box Pendant*

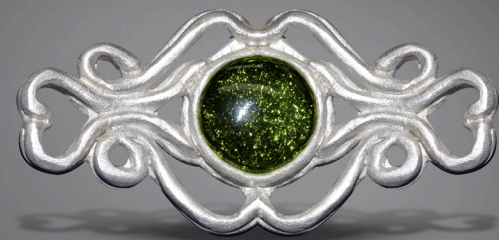
Techniques

- 3D construction with hollow forms
- Creating lip and lid
- Add embellishing with paper silver clay
- Proper firing of piece elements

Module C* *Glass Harmony*

Techniques

- Capturing glass with silver clay
- Properties of glass
- Creating strong connections
- Adding a bail into the design
- Firing the silver clay with glass properly



Module D* *Ancient Keum-Boo*

Techniques

- Creating transferable templates for clay
- Creating textures by hand
- Designing a back bail
- Proper application of 24k gold foil for Keum-Boo
- Finishing for fired silver and gold foil surfaces
- Adding patina to specified areas

Module E* *Stripe Carved Ring*

Techniques

- Hand shaping and sculpting a half round ring
- Using a template as carving guides
- Tools and techniques for carving
- Firing and finishing techniques



Module F* *Bezel-Set Stone Pendant*

Techniques

- Setting cabochons with traditional silversmith bezel wire techniques
- Attaching techniques with Art Clay Silver Paste
- Using design elements based on cabochons physical appearance
- Proper firing
- Appropriate setting of cabochon in bezel wire
- Finishing techniques



For further details regarding PRO Level Certification information, please visit:

www.ArtClayWorldAmerica.com

info@ArtClayWorldAmerica.com

